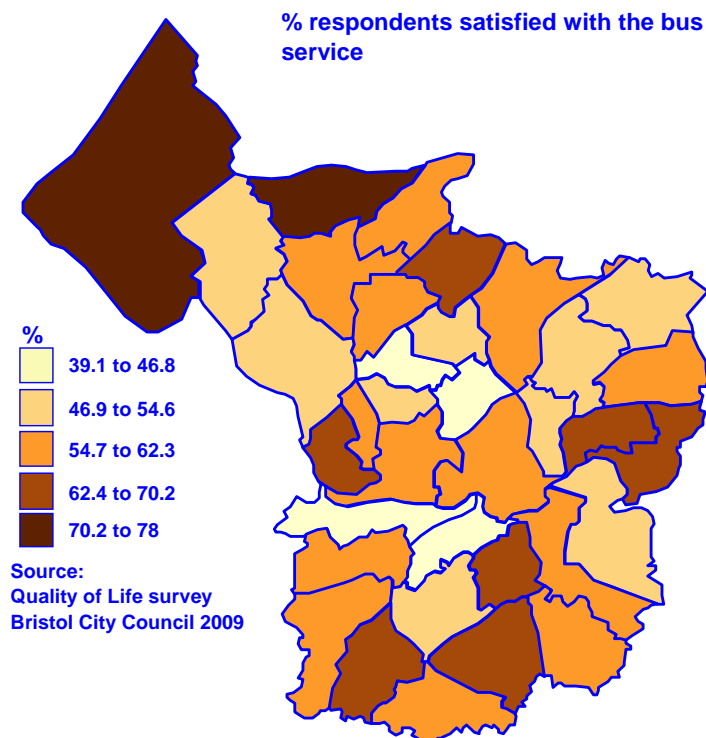
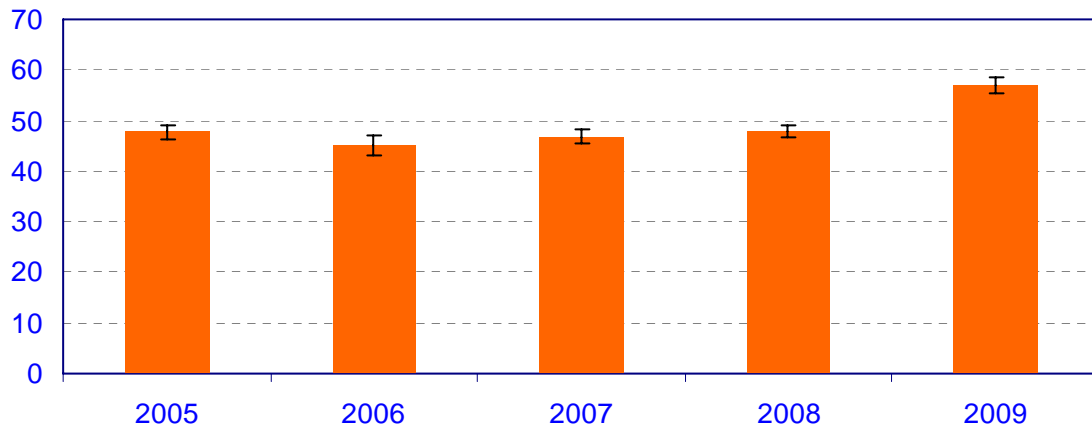


Bus usage and satisfaction (Source: Quality of Life survey 2005-2009
www.bristol.gov.uk/qualityoflife)

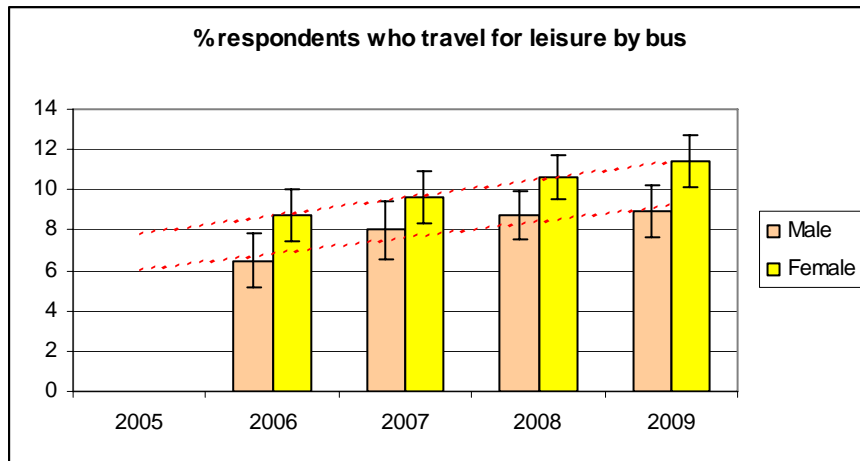
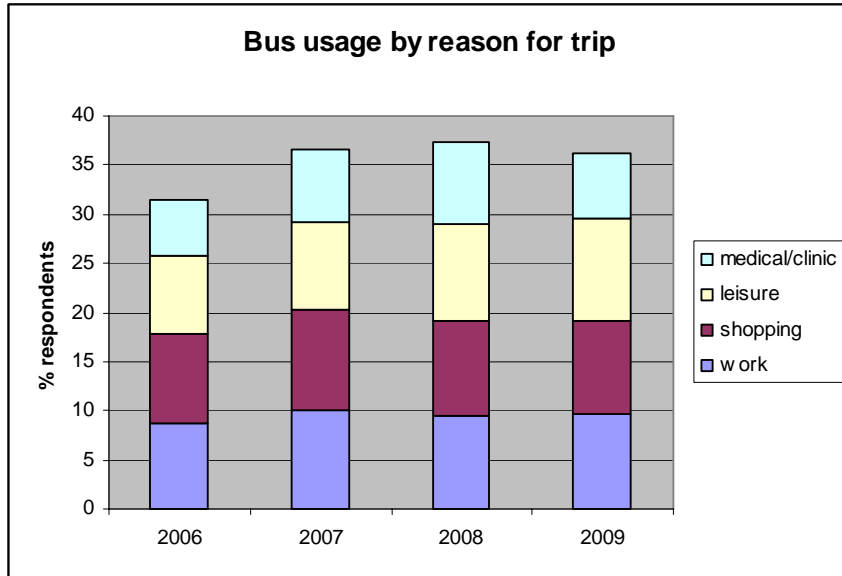
% respondents satisfied with the bus service



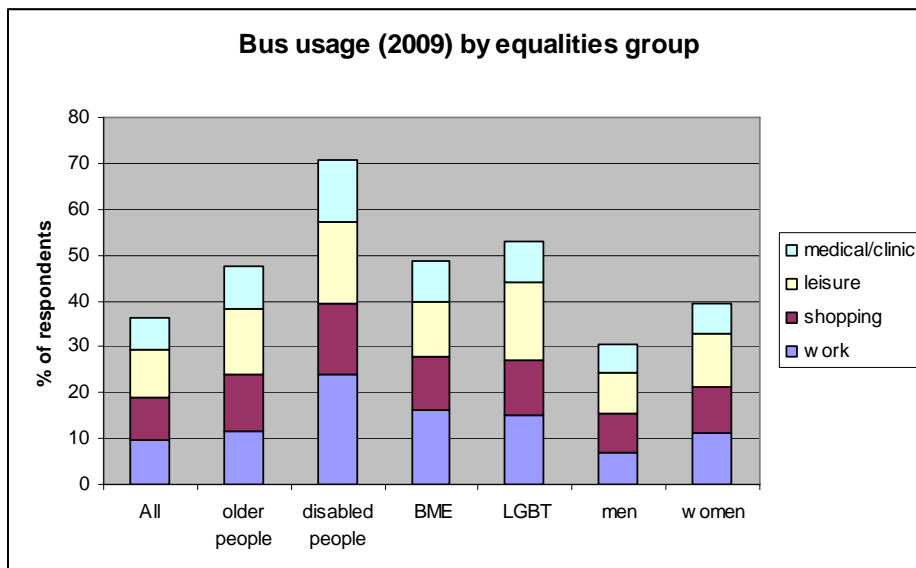
Generally satisfaction with the bus services has improved recently. In some wards satisfaction is improving (e.g. Avonmouth, Hartcliffe, Horfield, Henbury, St George East and West, Southmead, Lawrence Hill and Bishopsworth) whilst in Filwood it is falling.

Bus usage

Bus usage has remained steady, although use of buses for leisure trips has increased.

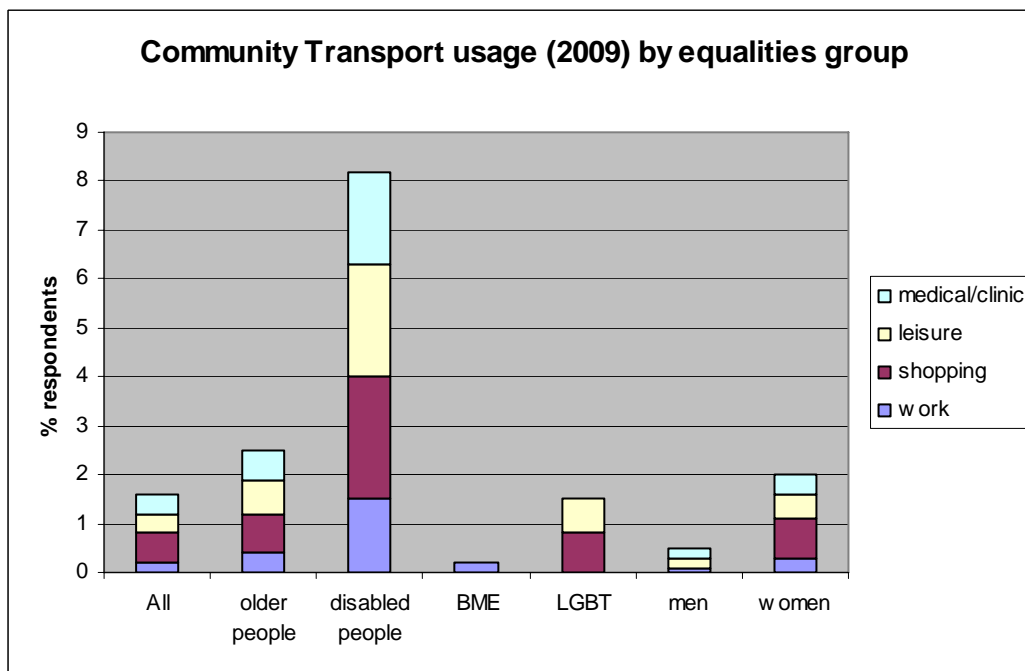
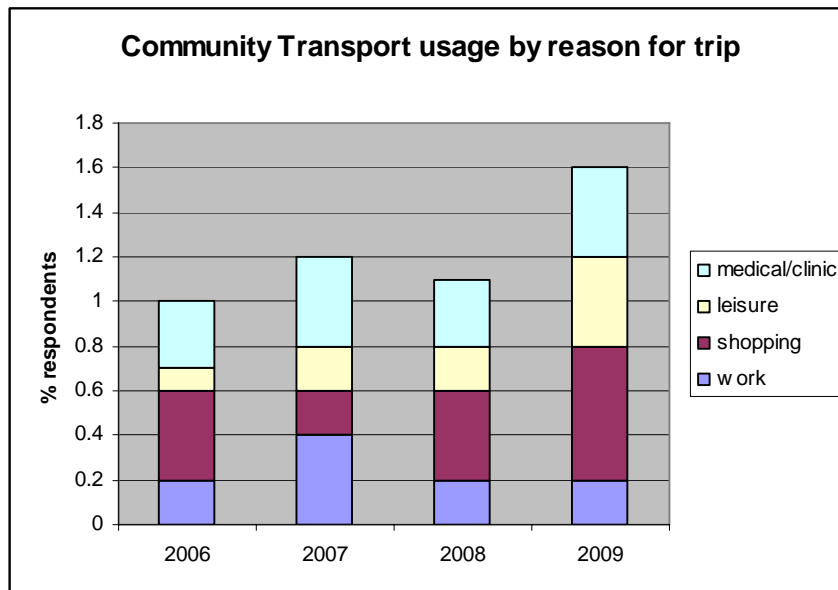


The responses from bus users (who responded to this survey) can be analysed by the different equalities groups (older people, disabled people, Black and minority ethnic groups (BME), lesbian, gay, bisexual and transgender (LGBT) and gender). The biggest group of users (for each trip type) is disabled people.



Community transport usage

This mode of transport has increased since 2006 and most trips, although still small in number are made for shopping.



When the proportion of Community Transport users is analysed by the different equalities, the biggest group of users (for each trip type) is disabled people, followed by older people. Very few BME people and men use this service.